

New York State Urban Development Corporation
d/b/a Empire State Development
Radisson
New York, New York
General Project Plan

Plan Amendment
November, 2012

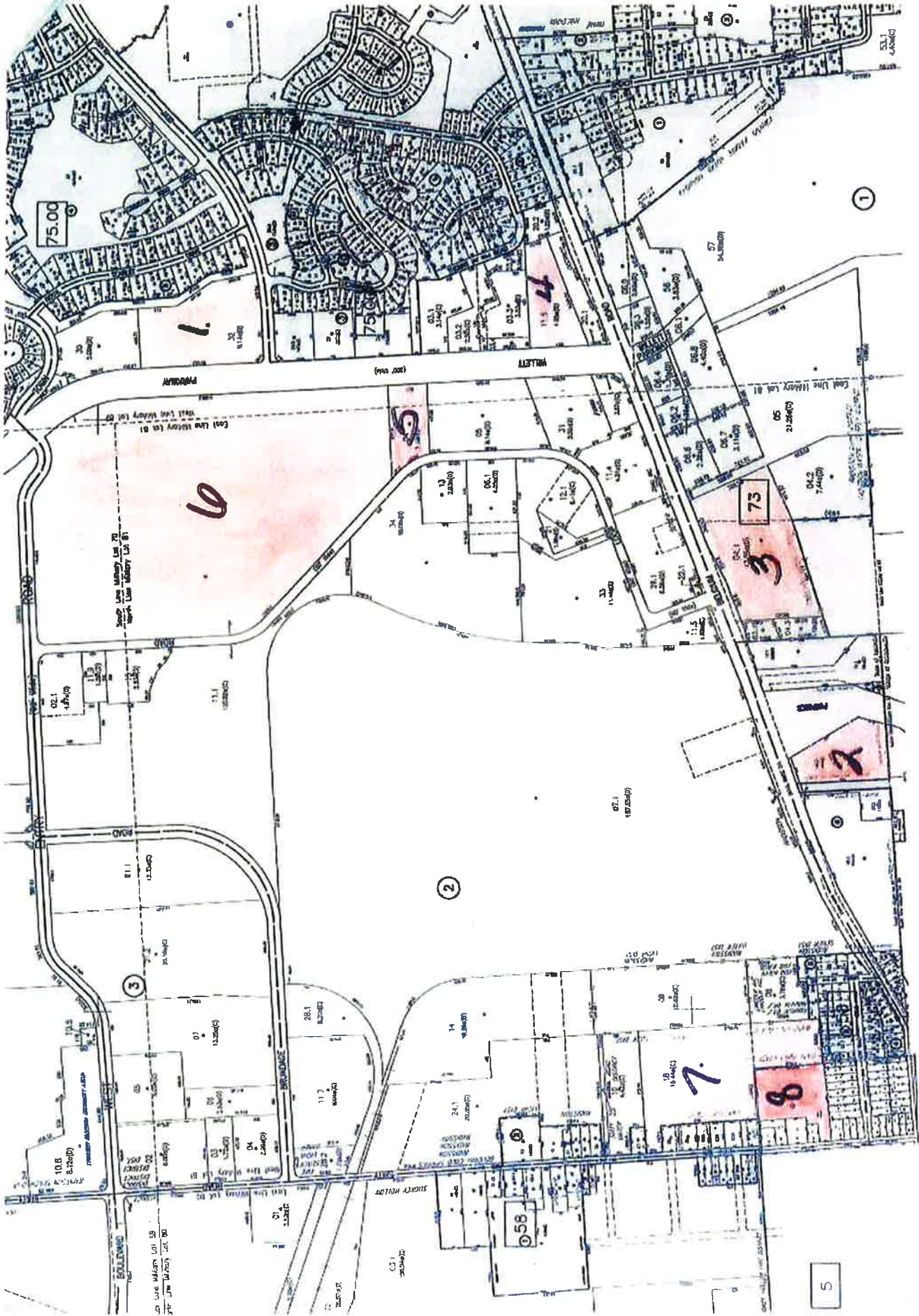
AMENDMENT NO. 8

Except as modified below, the Project's General Project Plan, affirmed as modified in June 1971, and amended in March 1974, September 1983, June 1987, 1995, September 2003, February 2004, and June 2010, remains unchanged.

The Amendment is to change the permitted land use of the below listed parcels from "Current Land Use" to "New Land Use" as follows (and as shown by Property number on the attached map):

Revised 10/2013

Key	Map	Town of Lysander Tax Map #	Approx Acreage	Current Land Use	New Land Use
1	Part of Lot 82	057.-02.32	9.14	Commercial/Office	Residential
2	Part of Lot 81	058.-06-09.2	4.96	Industrial	Residential
3	Part of Lot 81	073.-01-04.1	13.05	Industrial	Commercial/Retail
4	Part of Lot 82	057.-02-11.8	4.05	Commercial/Office	Commercial/Retail
5	Part of Lot 81 & 82	057.-02-04.0	3.3	Industrial	Commercial/Retail
6	Part of Lot 70 & 81	057.-02-11.1	78	Industrial	Commercial/Retail
7	Part of Lot 81	057.-02-18.0	15.44	Industrial	Residential
8	Part of Lot 81	005.-02-04.1	4.45	Industrial	Residential



75.00

1.

1

6

73

2

2

7

8

5

East Line Military Lot B1
West Line Military Lot B1

BRIDGE

SILVER HILLS

WILETT

02.1
474(0)

01.1
123(0)

03

10.8
8,720(0)

01
13,250(0)

02
13,250(0)

03
13,250(0)

04
13,250(0)

05
13,250(0)

28.1
13,250(0)

11.7
13,250(0)

14
13,250(0)

24.1
13,250(0)

058

07.1
10,250(0)

38
13,250(0)

18
10,440(0)

24
13,250(0)

08.1
4,250(0)

09.1
4,250(0)

12.1
4,160(0)

11.4
4,160(0)

11.2
11,250(0)

29.1
2,250(0)

02.7
2,250(0)

06.5
2,250(0)

08.2
2,250(0)

10.3
2,250(0)

12.4
2,250(0)

14.5
2,250(0)

16.6
2,250(0)

18.7
2,250(0)

20.8
2,250(0)

22.9
2,250(0)

25.0
2,250(0)

27.1
2,250(0)

29.2
2,250(0)

31.3
2,250(0)

33.4
2,250(0)

35.5
2,250(0)

37.6
2,250(0)

39.7
2,250(0)

41.8
2,250(0)

05
21,250(0)

04.2
7,440(0)

05.1
2,250(0)

06.2
2,250(0)

07.3
2,250(0)

08.4
2,250(0)

09.5
2,250(0)

10.6
2,250(0)

11.7
2,250(0)

12.8
2,250(0)

13.9
2,250(0)

14.0
2,250(0)

15.1
2,250(0)

16.2
2,250(0)

17.3
2,250(0)

18.4
2,250(0)

19.5
2,250(0)

20.6
2,250(0)

21.7
2,250(0)

22.8
2,250(0)

23.9
2,250(0)

24.0
2,250(0)

25.1
2,250(0)

26.2
2,250(0)

27.3
2,250(0)

28.4
2,250(0)

29.5
2,250(0)

30.6
2,250(0)

31.7
2,250(0)

32.8
2,250(0)

33.9
2,250(0)

34.0
2,250(0)

35.1
2,250(0)

36.2
2,250(0)

37.3
2,250(0)

38.4
2,250(0)

39.5
2,250(0)

40.6
2,250(0)

41.7
2,250(0)

42.8
2,250(0)

43.9
2,250(0)

44.0
2,250(0)

45.1
2,250(0)

46.2
2,250(0)